

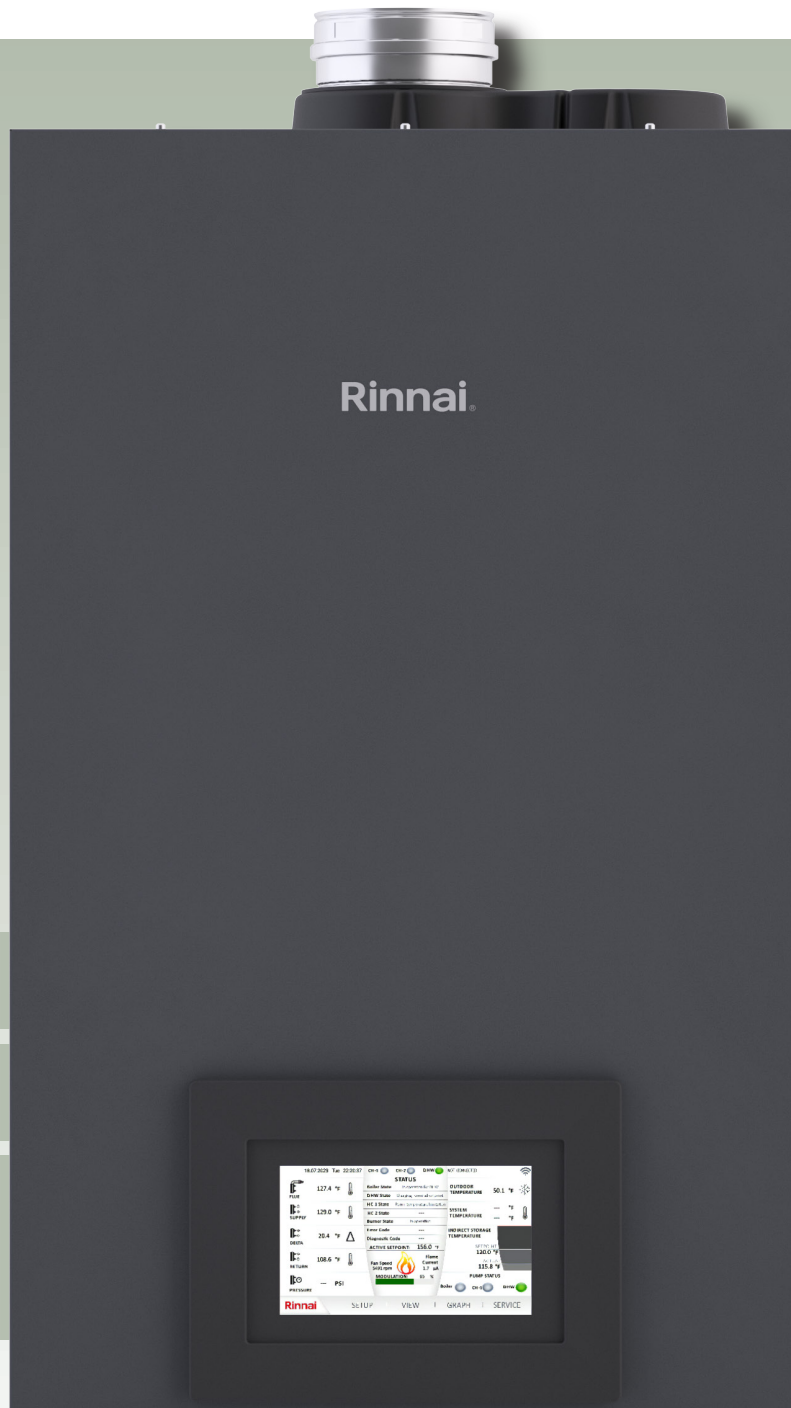
# Rinnai®



# RCB • SERIES™

## Commercial Wall-Hung Boiler

**COMING  
2024**  
3 Floor Models  
500,000 • 750,000  
1,000,000 Btu/HR



**Remarkable performance including:**

**10:1**

Turndown Ratio

**97%**

Thermal Efficiency

**7"**

Intuitive LCD  
Touchscreen  
Display

RCB301AN and RCB399AN

## Advanced Performance

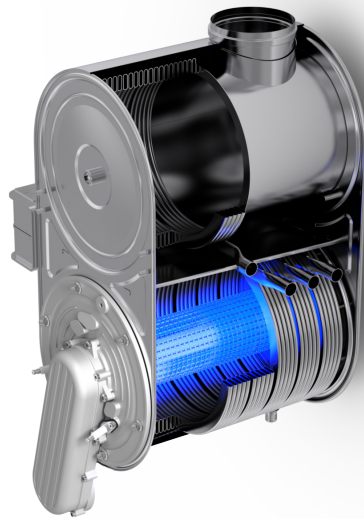
The RCB-Series™ Boiler offers a compact building heat source that delivers reliable, energy saving performance with a ground-breaking feature set that outperforms other boilers in its class.

Available in a 301,000 Btu/Hr and 399,000 Btu/Hr Wall-Hung Model that can provide heating to the building as well as connect to an indirect tank for Domestic Hot water production.



## Maximum Efficiency in a Compact Design

- **Stainless Steel Water Tube Heat Exchanger** (ASME H stamp)
- **97% Thermal Efficiency** (Energy Star rated)
- **10:1 Turndown Ratio** for precise load tracking and energy savings
- **Hydroformed coil design** maximizes heat transmission while **reducing the overall weight and footprint**



- **Superior Premix burner performance** reduces emissions and increases turn down ratio
- **Ultra Low NOx Emission**
- **Outdoor Reset Sensor included**



## Intuitive Controls

for simple start up, maintenance and monitoring

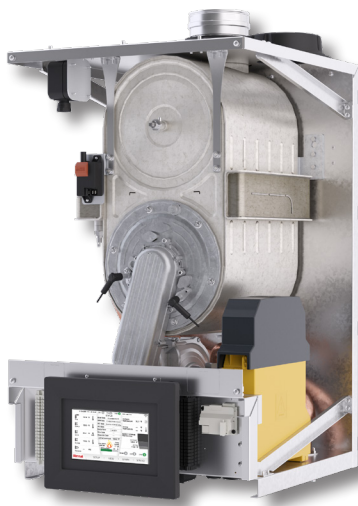


RCB-Series™ makes it easy to program, access and monitor your boiler performance data onsite or with multiple connectivity features.

- **7" LCD Touchscreen** puts total control at your fingertips
- **Simple set-up** lets you adjust and customize parameters to maximize performance
- **Easy to access and monitor** overall boiler performance data via Wi-Fi
- **Demand Screen** gives you critical information with color coded boiler status messages
- **Built-in Pump Control** - indirect pump, boiler pump, system pump
- **Standard Integrated Wi-Fi Connectivity**
- **Built-In Modbus (optional BACnet and Lon Works)**
- **0-10V input for Building Management System (BMS)**

## Easy Installation and Service

- **Light weight** at 170 lbs (301 model) or 183 lbs (399 model)
- **Small footprint**, only 7.9 cubic feet saves space in mechanical room
- **Smart Service Access** with 270 degrees of access with 3 removable panels
- **Transport with ease**, fits into freight elevators or standard doorways
- **Easy-Hang Wall Mount bracket** speeds installation
- **No special tools required**
- **Field Conversion Kit** available (from NG to LP and from LP to NG)



Removable panels for 270 degrees of access



Easy-Hang Wall Mount Bracket

## Integrated Cascade Connection

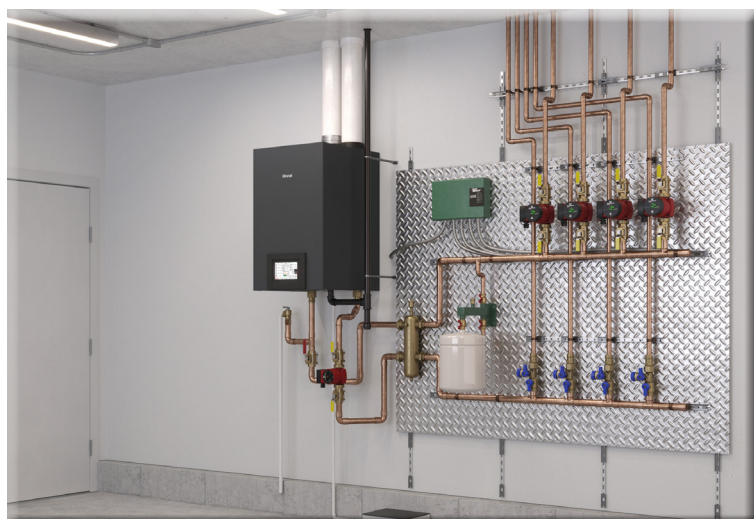
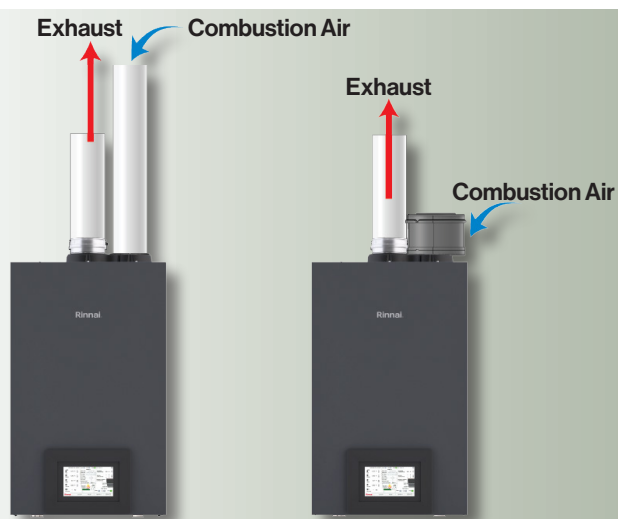
Multiple boiler configurations are accommodated with our Integrated Cascade Logic that distributes runtimes equally for optimal application diversity.

- **Runtimes are equally distributed on up to 8 units** with interchangeable Lead unit
- **Simplifies operation and interchangeability** of units in a system, One SKU for each Btu size
- **No special cables required**, uses industry standard thermostat wire



## Venting Options up to 140 feet

- **Multiple venting options in either twin pipe or room air** allows you to locate units where you want to within the building
- **Concentric side wall or vertical termination configurations optional** to minimize building penetrations
- **Use 4" PVC or PP for maximum vent runs of 140 feet** in both twin pipe and room air applications
- **Common Vent up to 4 units on 6" PVC or PP** for maximum vent runs of 150 feet
- **Vent Material options are PVC, CPVC, PP and Stainless Steel**



Model		RCB301AN	RCB399AN
Input Rate		Max: 301,000 Btu/Hr Min: 30,100 Btu/Hr	Max: 399,000 Btu/Hr Min: 39,900 Btu/Hr
Dimensions - Width x Height x Depth		19.4 in. x 35.75 in. x 21.8 in. (493 mm x 908 mm x 554 mm)	
Shipping Weight		194 lb (88 kg)	207lb (94 kg)
Appliance Type		Fully Condensing Gas-Fired Solo Boiler	
Installation Type		Indoor Wall-Hung	
Flue System		Category IV Forced Draft Direct Vent, Power Vent	
Ignition System		Direct Electronic Ignition	
Heat Exchanger		316L Stainless Steel Water Tube	
Heat Exchanger Surface Area		24.6 sq ft	30.7 sq ft
Gas Consumption (Btu/Hr)	Minimum	30,100	39,900
	Maximum	301,000	399,000
Temperature Setting	Central Heating	(Minimum - Maximum) 86°F - 180°F (30°C - 82°C)	
	Indirect Tank (DHW)	104°F - 176°F (40°C - 80°C)	
Water Content		1.8 gal (6.8 lt)	2.2 gal (8.3 lt)
Water Pressure	Central Heating	Minimum: 14.5 PSI (1 bar) Maximum: 87 PSI (6 bar) Maximum Allowable Water Pressure (MAWP): 160 PSI (1103 kPa)	
	Pressure Relief Valve (included with system)	75 PSI (5.2 bar) (Pressure Relieve Valve included with system)	
Connection Sizes	Gas Inlet	1 inch NPT	
	Supply/Return	1.25 inch NPT	
	Intake/Exhaust	4 inch PVC	
Min - Max Exhaust Vent Run		10 feet (3 meters) - 140 feet (43 meters)	
Min - Max Intake Vent Run		0 feet (0 meters) - 140 feet (43 meters)	
Electrical Voltage	Normal	120VAC 60 Hz, less than 6.3 Amps	
Gas Supply Pressure <sup>1</sup>	Natural Gas	3.5 in. - 10.5 in. W.C. (0.87 - 2.61 kPa)	
	Propane	8.0 in. - 13.5 in. W.C. (1.99 - 3.36 kPa)	
Electric Connections		AC 120 Volts, 60 Hz	
Certifications		ANSI Z21.13, CSA 4.9, ASME	
Canada CRN		Y6325.2C	
Safety Devices		Flame Ionization Probe, Water Temperature High Limit, Exhaust Temperature High Limit, Water Pressure Sensor, Blocked Vent Pressure Switch, Condensate Trap, Burner Door Switch, Thermal Fuse, Freeze Protection	

<sup>1</sup>Maximum gas supply pressure must not exceed the value specified by the manufacturer.

Rinnai products are continually being updated and improved, therefore, specifications are subject to change without prior notice.

Rinnai America Corporation | 103 International Drive | Peachtree City, Georgia 30269 | rinnai.us | rinnai.ca | 1-800-621-9419



Official Water Heater of Stewart-Haas Racing and Tony Stewart Racing